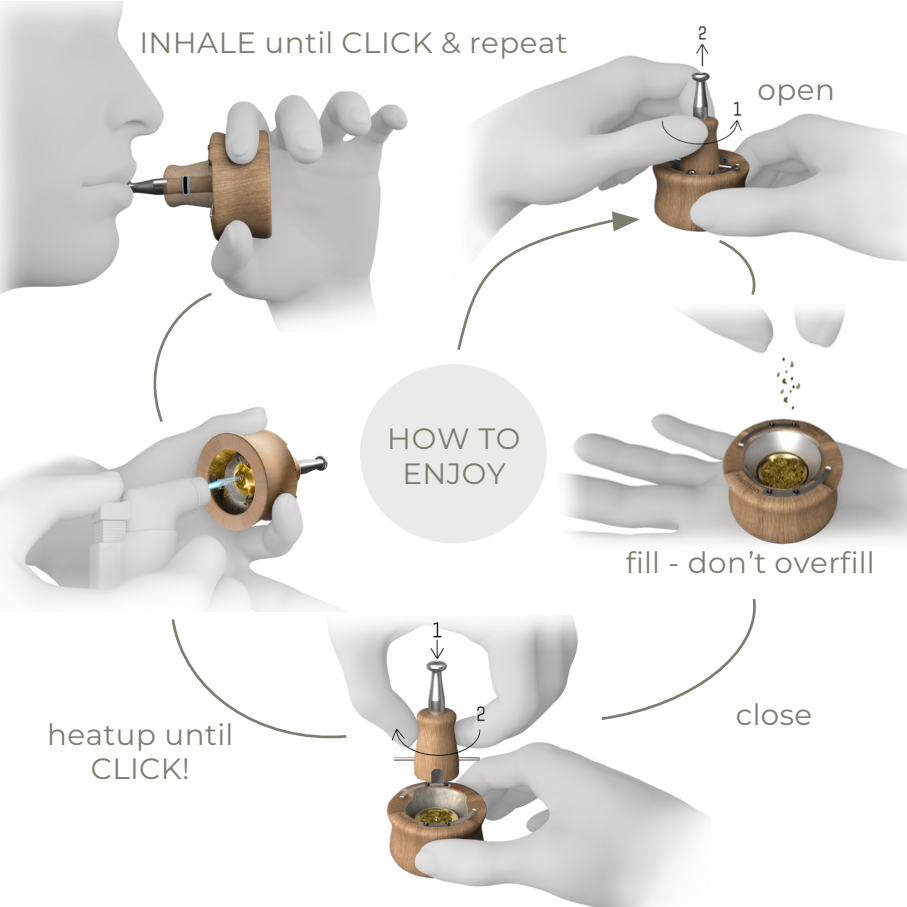


INHALE until CLICK & repeat



CLEANING



swipe out

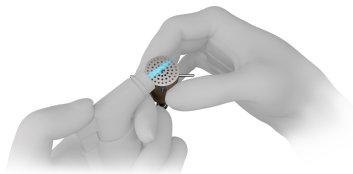


clip off



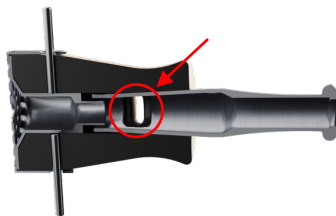
soak in

TIPPS & TRICKS



control the temperature with the flame length: bigger flame = higher temp.

TIPP: turn the knob on the bottom of the lighter to + or -



adjust the airflow by twisting the mouthpiece

TIPP: start with the airflow fully closed and adjust it from there.



INHALE

vapman manual